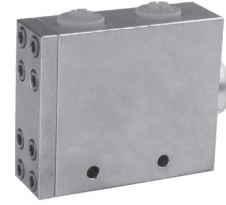


### Features

- The flow divider can both equally divide flow and combine flow.
- Flow divides from A to B and C, and combines flow from B and C to A.
- The dividing and combining flow ratio is 50:50 independent of the pressure.
- Steel body with clear zinc plating

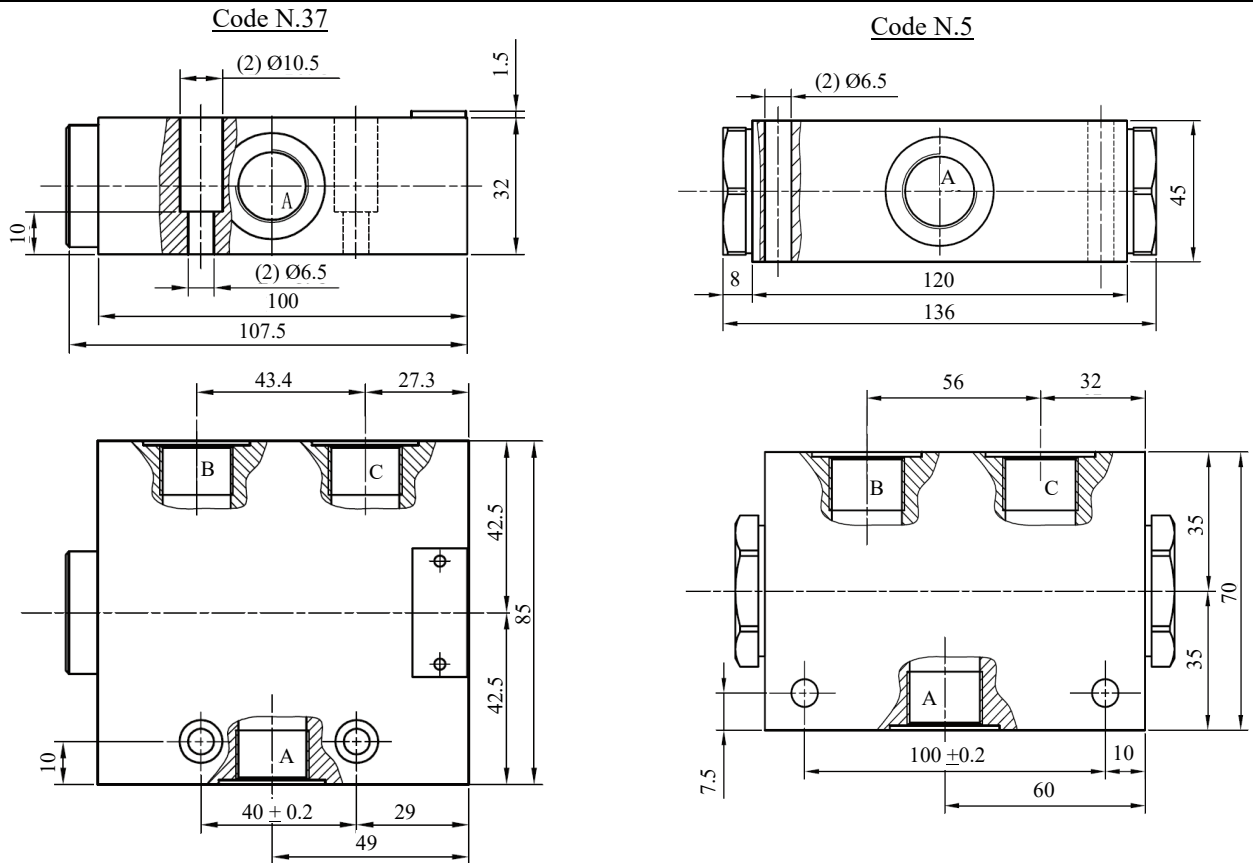


### Ordering Details

V	Valve																		
I	Inline connection																		
FD-	Flow Divider																		
N.37-	Port Size	<table border="1"> <tr> <th>Nominal NPTF Thread Size</th> <th>Code</th> </tr> <tr> <td>3/8"</td> <td>N.37</td> </tr> <tr> <td>1/2"</td> <td>N.5</td> </tr> </table>	Nominal NPTF Thread Size	Code	3/8"	N.37	1/2"	N.5	<table border="1"> <tr> <th>Nominal Thread Size</th> <th>Code LPM</th> </tr> <tr> <td>3/8"</td> <td>20</td> </tr> <tr> <td>3/8"</td> <td>35</td> </tr> <tr> <td>3/8"</td> <td>50</td> </tr> <tr> <td>1/2"</td> <td>70</td> </tr> </table>	Nominal Thread Size	Code LPM	3/8"	20	3/8"	35	3/8"	50	1/2"	70
Nominal NPTF Thread Size	Code																		
3/8"	N.37																		
1/2"	N.5																		
Nominal Thread Size	Code LPM																		
3/8"	20																		
3/8"	35																		
3/8"	50																		
1/2"	70																		
50-	Max. Flow Option																		
1	Series:																		

Example Part Number: VIFD-N.37-50-1

### Dimensions and Technical data



Size		Min. Flow Rate lpm (gpm)	Max. Flow Rate lpm (gpm)	Max. Pressure, bar (psi)	Flow Dividing Accuracy	Oil Temperature Range °C (°F)	Oil Viscosity Range mm <sup>2</sup> /s	Oil Cleanliness
NPT	LPM							
N.37	20	8 (2.1)	15 (4)	315 (4568)	±5%	-20°C to +70°C (-4°F to 158°F)	15-380	NAS 1638
N.37	35	12 (3.2)	35 (9.2)	315 (4568)				
N.37	50	16 (4.2)	50 (13)	315 (4568)				
N.5	70	35 (9.2)	100 (26)	315 (4568)				